



ROYAL  
OPERA  
HOUSE

# Royal Opera House Case Study



**Project:**

Visitor rest rooms

**Role:**

Specialist sub-contractor

**Project Works:**

Specialist dry-lining, architectural metalwork, specialist joinery, floor finishing, mechanical & electrical services.

Working in a live sensitive built environment, we utilised real time noise and vibration equipment so works could be assessed and sequenced around the ROH rehearsal and performance schedule, whilst maintaining maximum productivity.

Our designs accommodated the Royal Opera House Grade 1 listed building status.

**Duration:**

16 weeks

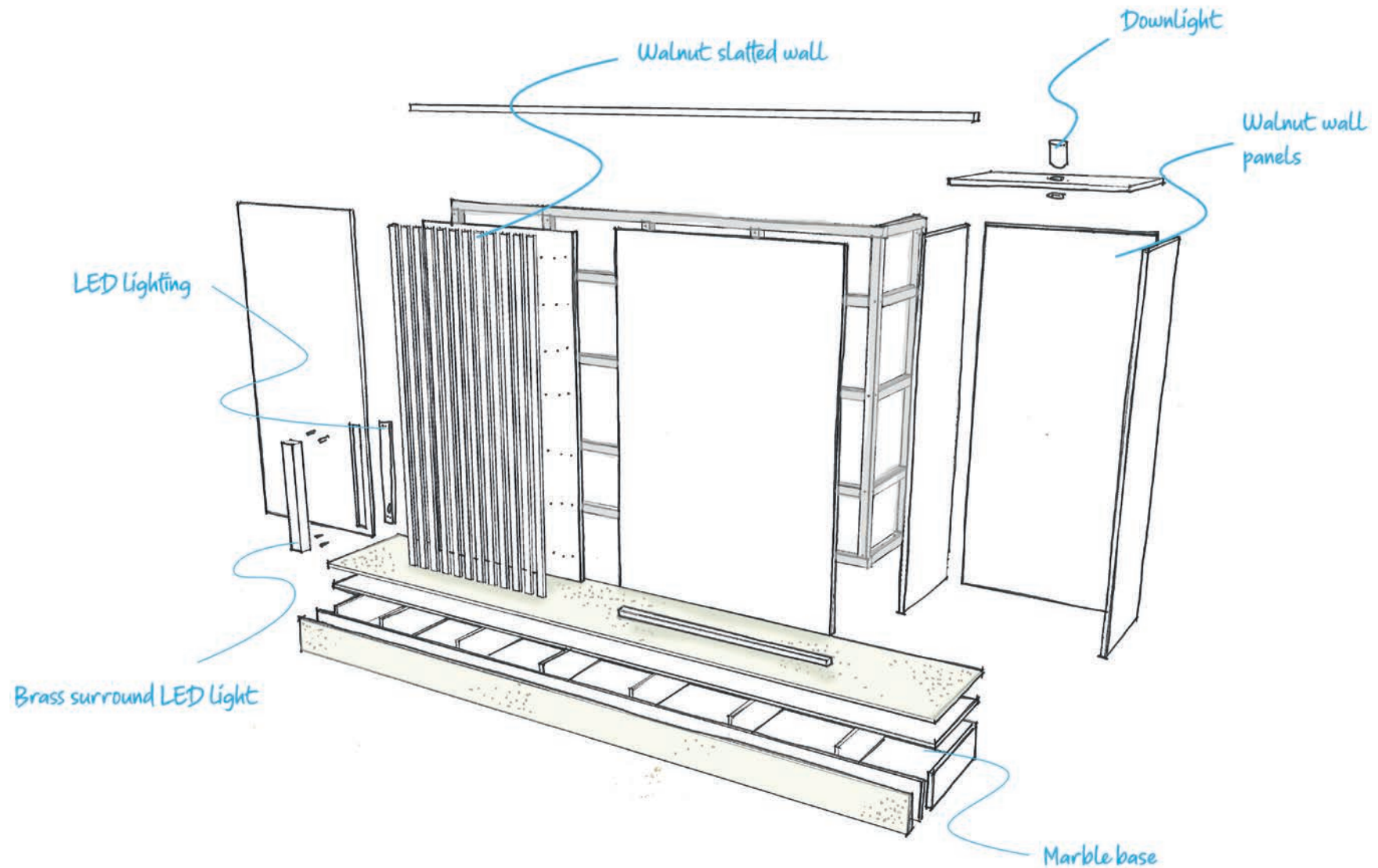
[www.fitoutuk.com](http://www.fitoutuk.com)



fit out

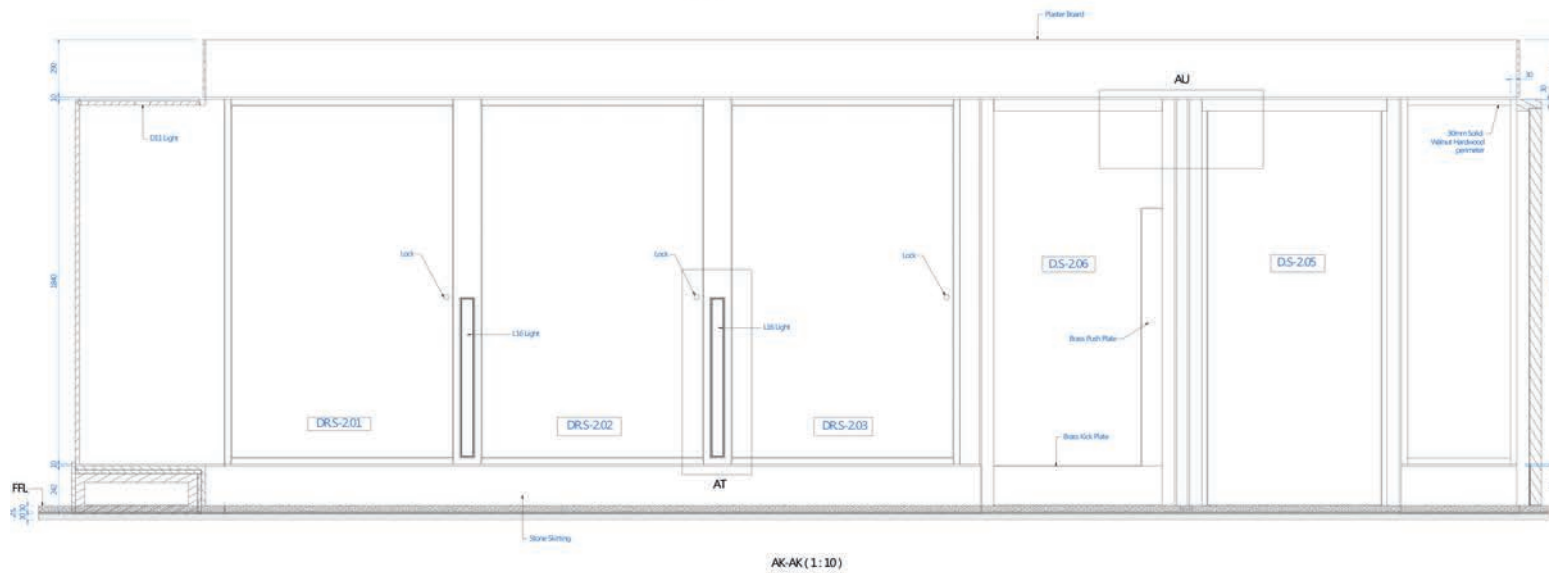
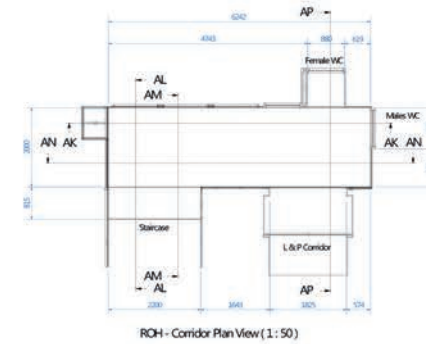
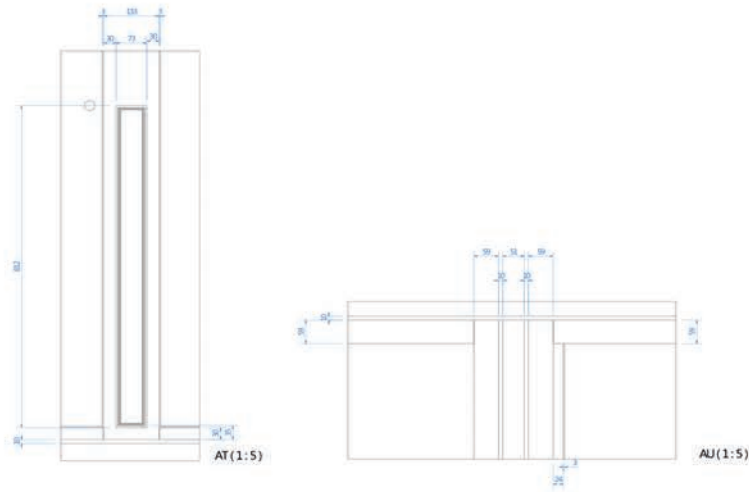


# Royal Opera House Main Rest Room Corridor Detail





# Royal Opera House Main Rest Room Corridor Detail





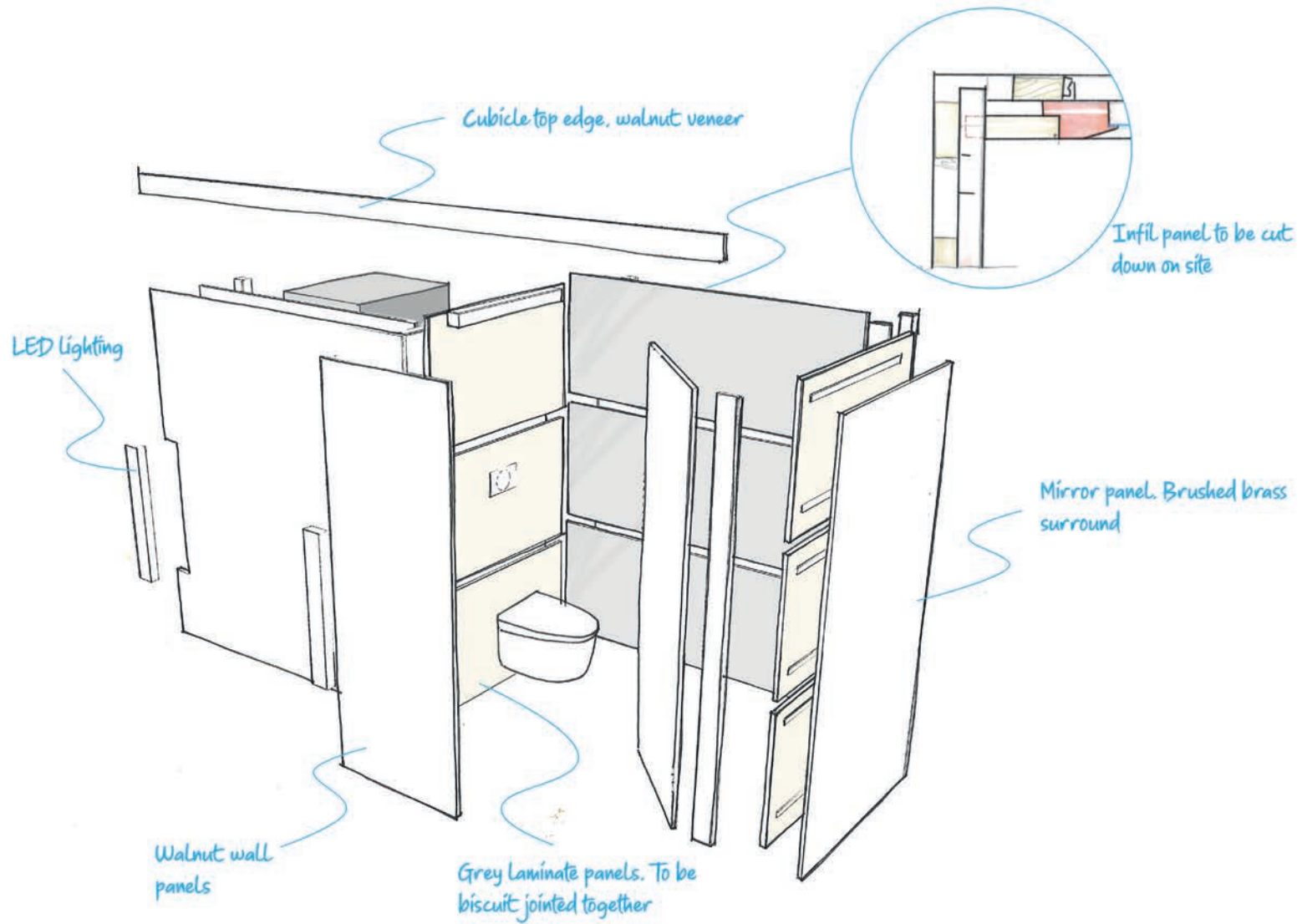


# Royal Opera House Main Rest Room Corridor



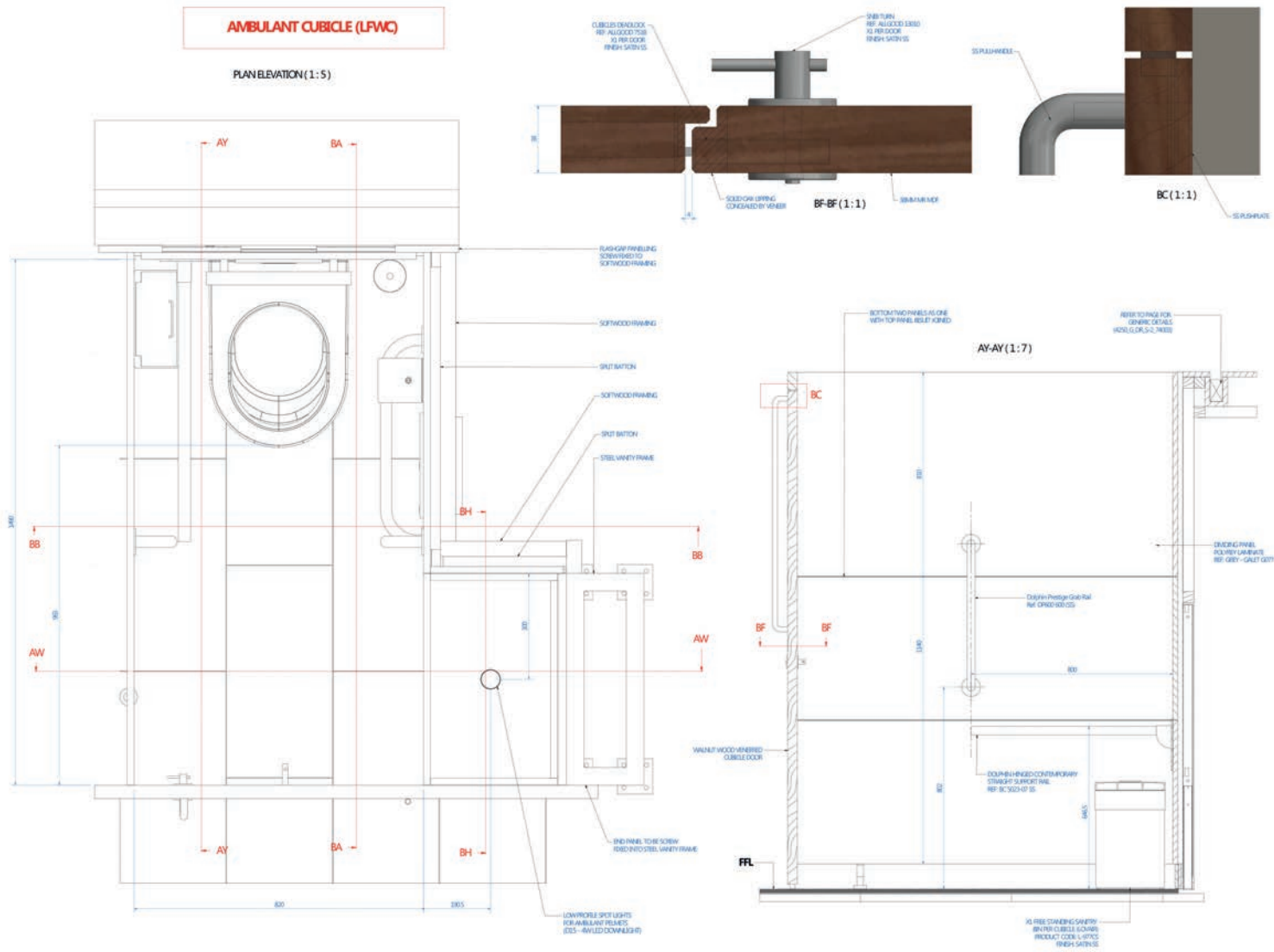


# Royal Opera House Cubicle Detail





# Royal Opera House Cubicle Detail







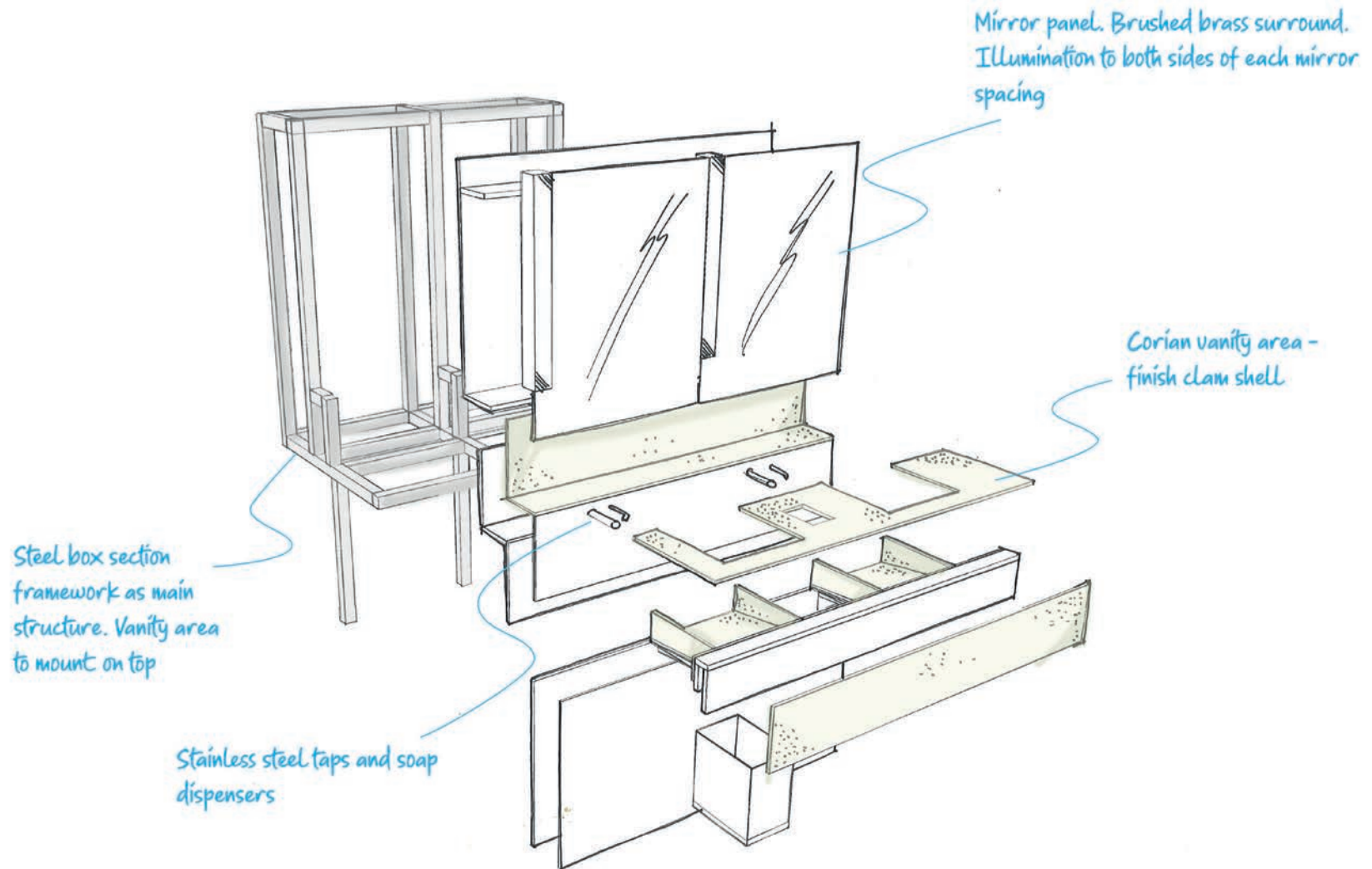
# Royal Opera House Cubicle





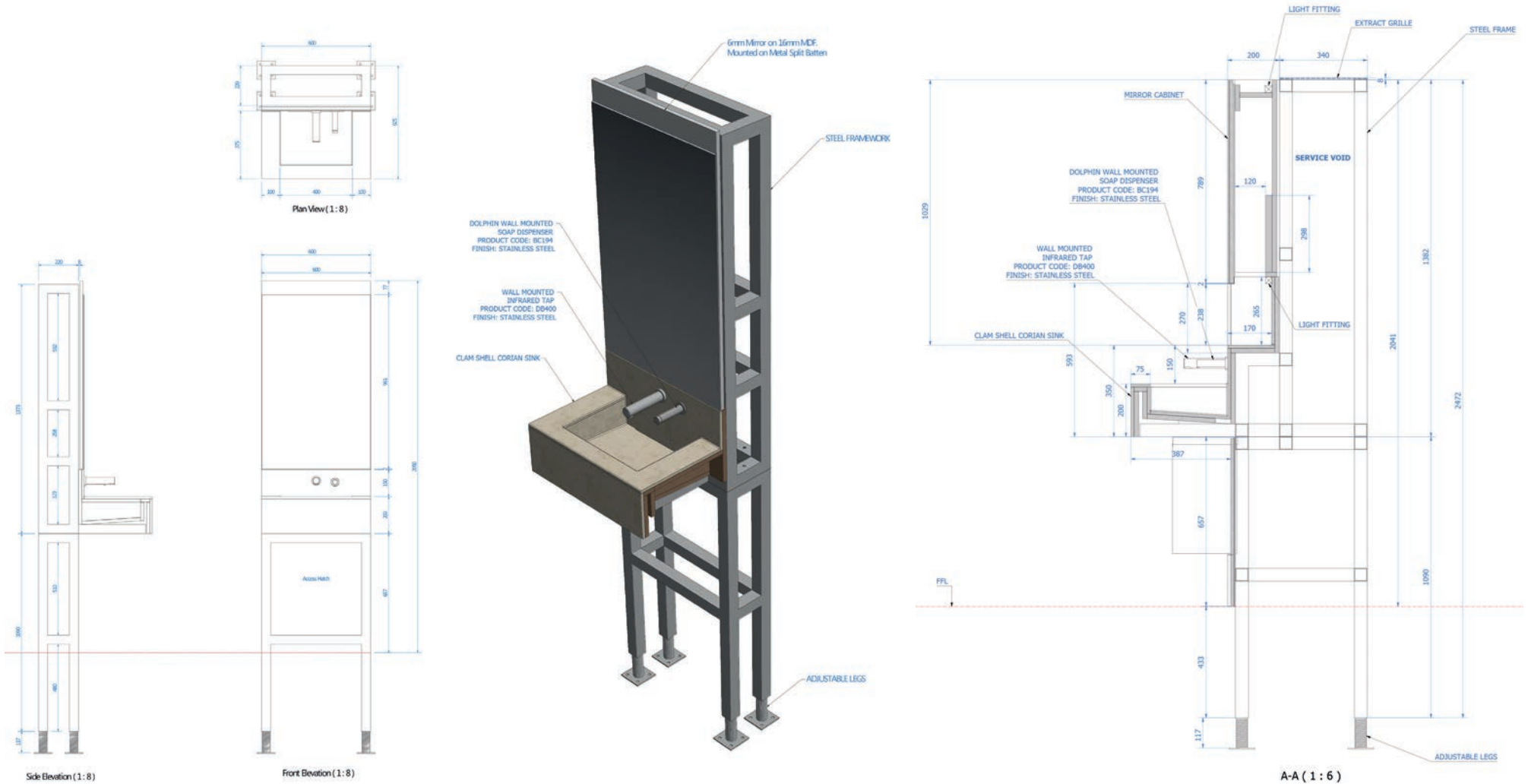


# Royal Opera House Vanity Area Detail





# Royal Opera House Vanity Area Detail







# Royal Opera House Vanity Area



Stanton Williams  
36 Graham Street  
London N1 8GJ  
+44 (0)20 7880 6400  
reception@stantonwilliams.com  
www.stantonwilliams.com

Sam Rogers  
Fit Out UK  
27 Abbey Road  
London  
NW10 7SJ

**Project**  
Royal Opera House

**Project Ref**  
463

RE: Fit Out UK reference

To whom it may concern.

Stanton Williams worked closely with Fit Out UK on the first phase of the Royal Opera Houses' Open Up project in which Fit Out UK took the role of fit out contractor.

**Principal Directors**  
Alan Stanton  
Paul Williams  
Gavin Henderson  
Patrick Richard

**Directors**  
Robert Bird  
Kaori Ohsugi  
Richard Wardle

**Associate Directors**  
Doriano Chiarparin  
Anne Feltenbooth  
Stephen Hadley  
Kalpesh Intwala  
Eleri Maki

Stanton Williams Limited  
Registered address above  
Registered in England  
Number 4024351

Fit Out UK's contribution to this complex and multi award winning project was immense and their clear understanding of the design, attention to detail and ability to co-ordinate with the other specialist contractors really showed in the end product.

The project team led by Jae Vandermere and Lucy Atkinson, together with the operatives on site, were always very accommodating and communicated well throughout the works.

The finished job looked amazing and is testament to Fit Out UK's commitment to delivering high-quality work within challenging and complex sites.

We look forward to working with Fit Out UK again in the future.

Your sincerely

**Tom Shell** (He/Him)  
Senior Associate

For and on behalf of Stanton Williams Ltd  
36 Graham Street, London N1 8GJ  
Telephone +44(0)20 7880 6400  
Mobile +44(0)7940 110701  
[www.stantonwilliams.com](http://www.stantonwilliams.com)

STANTON  
WILLIAMS





ROYAL  
OPERA  
HOUSE





fit out



FIT OUT (UK) LTD

Head Office  
27 Abbey Road  
Park Royal  
London  
NW10 7SJ

T: +44 (0)20 8963 6900

[www.fitoutuk.com](http://www.fitoutuk.com)